

Alto II

Mobile Phone

User Manual

Forewords

Copyright© 2011 Gold GMT SA All Rights Reserved

Reproduction, transfer, distribution or storage of part or all of the contents in this document in any form without the prior written permission as Gold GMT SA.

Statement

Pictures contained in the present manual can vary from the enclosed mobile phone. Please refer to the enclosed mobile phone as the product. Gold GMT reserves the right to revise this document or withdraw it at any time without prior notice.

Content

Section	Page
• General information	4
• Preparation	7
• Startup	12
• Call section	14
• Contacts section	20
• Messages section	26
• Settings section	31
• Alarms section	39
• Safety precautions	48

This manual provides detailed step-by-step procedures for proper use of your Alto II mobile phone.

- Prepare the Alto II mobile phone according to the instructions found from page 7.
- Let the device make a full battery charging before first use (at least 1h).
- Switch-on your Alto II mobile phone and follow the startup procedure on page 12.
- Refer to the manual descriptions for any operation.

General Information

The Alto II mobile phone is a simple, convenient and robust solution for communication. It has been designed to compensate several sensory and cognitive troubles:

- Simplified menus
- Improved readability
- Voice Guide (with SMS reading)
- Audio up to 60dB
- Improved autonomy
- Emergency calls



Accessories

Cradle



Adapter



Cable



Ear-set



Battery



Simplified Manual



Altoll parts description

Parts designation:



Preparation

Remove the back panel of your Alto II,
and insert the SIM card:



Preparation

Insert the battery and replace the back panel:



Insert the handset in the cradle, connect the adapter cable and the AC plug:



N.B: You must let your Alto II in the cradle during 1h at least for the first charging.

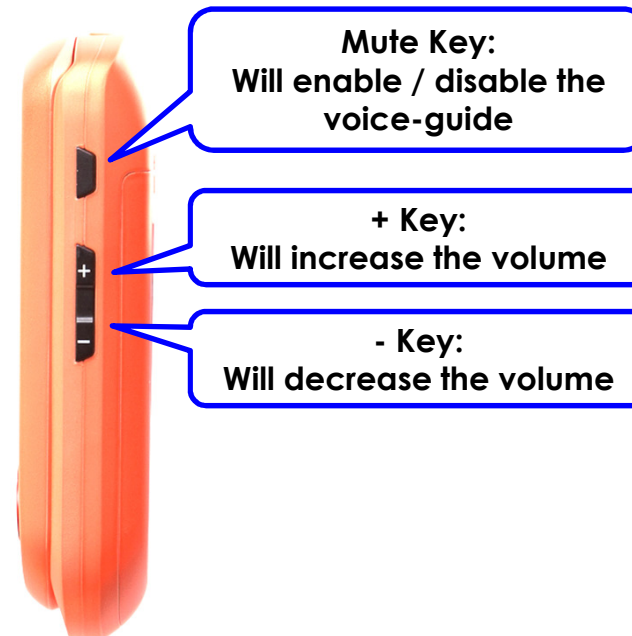
Voice-guide

Once your mobile phone is switched-on, the voice-guide starts to speak to deliver information about proper usage:



"Welcome to the mobile phone Alto. This phone is speaking and will provide help and advice along it's use...."

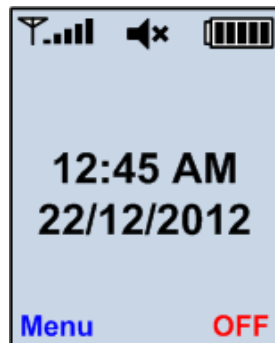
You can mute or tune the volume using the following right-side keys.



Aside of advice, the voice-guide will read the content of your SMS to improve the accessibility.

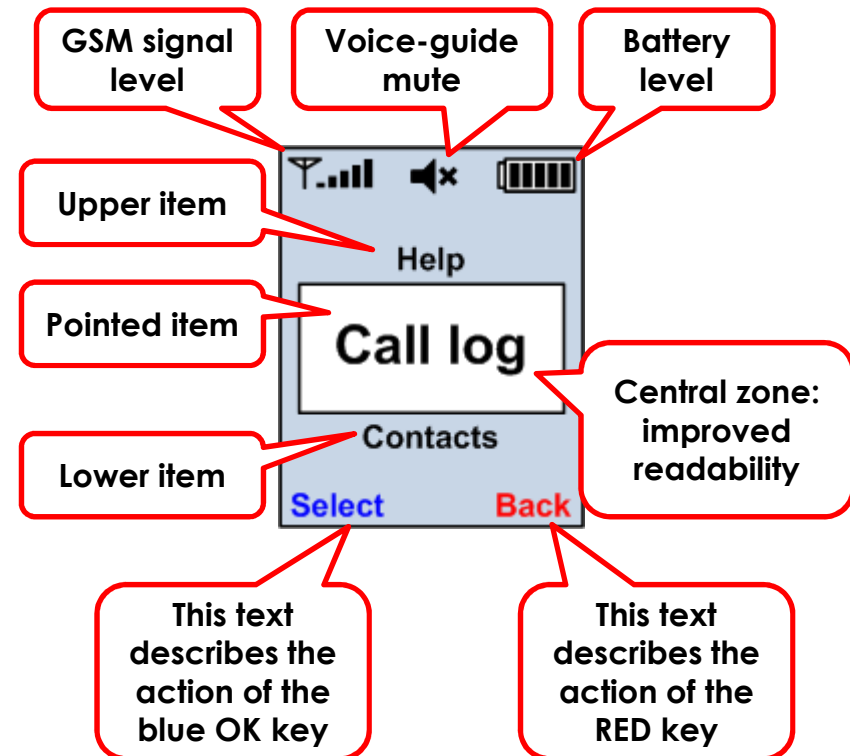
Display

Once your mobile phone is switched on and waiting for use, the main screen is the following:








You can access the main menu by pressing the OK key. Then, the main menu is displayed as a list that you can navigate with up/down keys, and select the item by pressing the OK key.

How to read your screen:



Important notifications

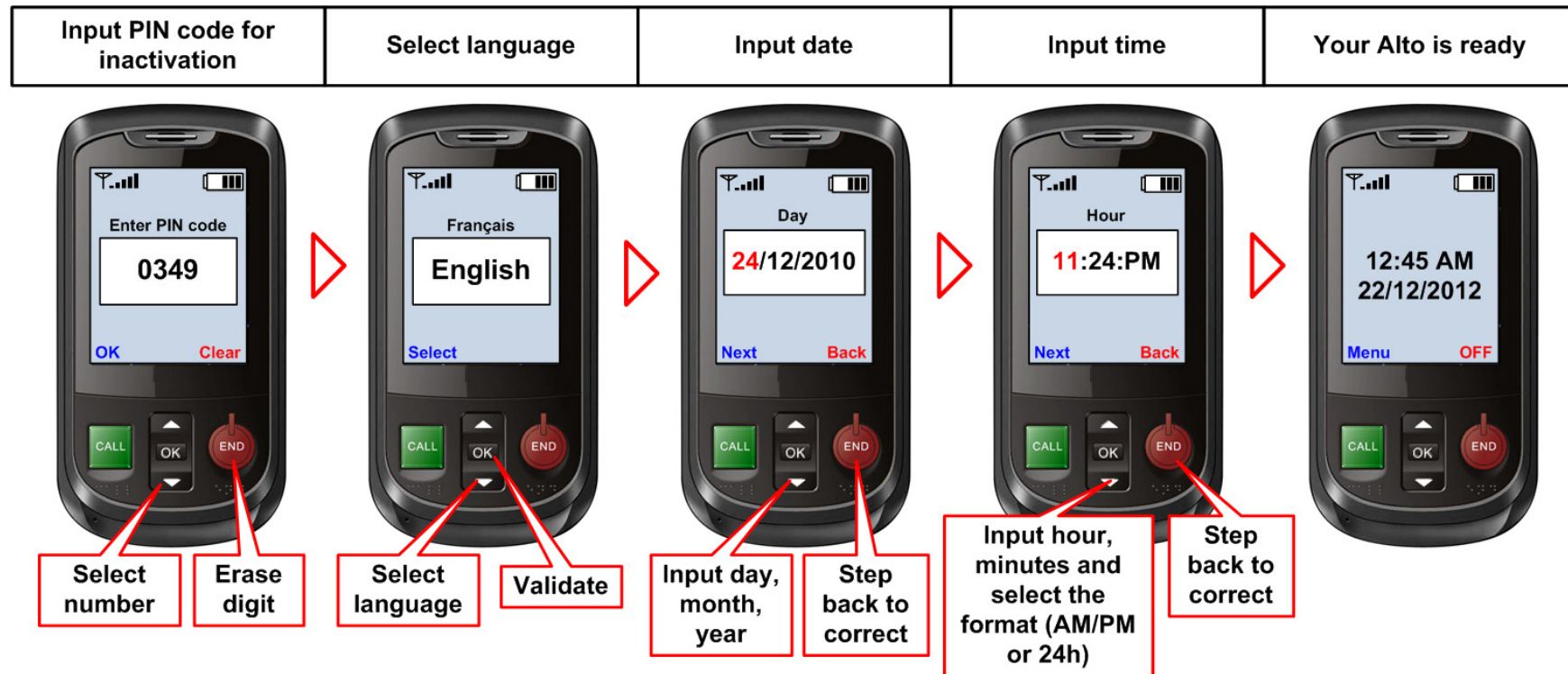
Special events are notified with specific background colors:

Battery is too low	You have generated the SOS alarm call	Reminder is notified	People is calling	New message received
				
Phone needs urgent charging, you have to place phone in the cradle	Wait your phone to connect SOS number. Cancel the alarm by pressing the RED key	Press the RED key to escape from reminder	Press the green key to answer or the red key to reject the call.	Press the blue key to read the messages

Startup

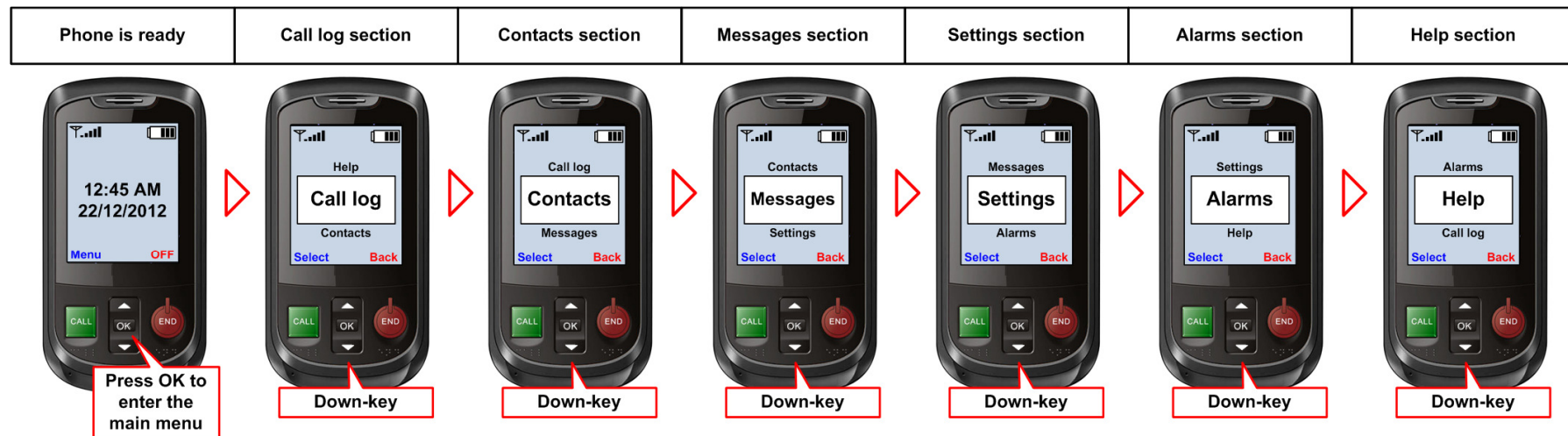
After pressing the RED key for more than 3 seconds, step through the illustrated steps. The PIN code has only to be inactivated the first time the SIM card is used.

If the operator is smart enough to provide date and time the related steps are automatically skipped.



Main menu and sections

The main menu is accessed by pressing the OK key. The different sections can be covered using the up and down keys:



Call Section

Calls management covers:

- Selecting a contact to call
- Input a number to call
- Starting an emergency call
- Enter the call log and access to received and sent calls.

These operations are explained and detailed step-by-step in the present section.



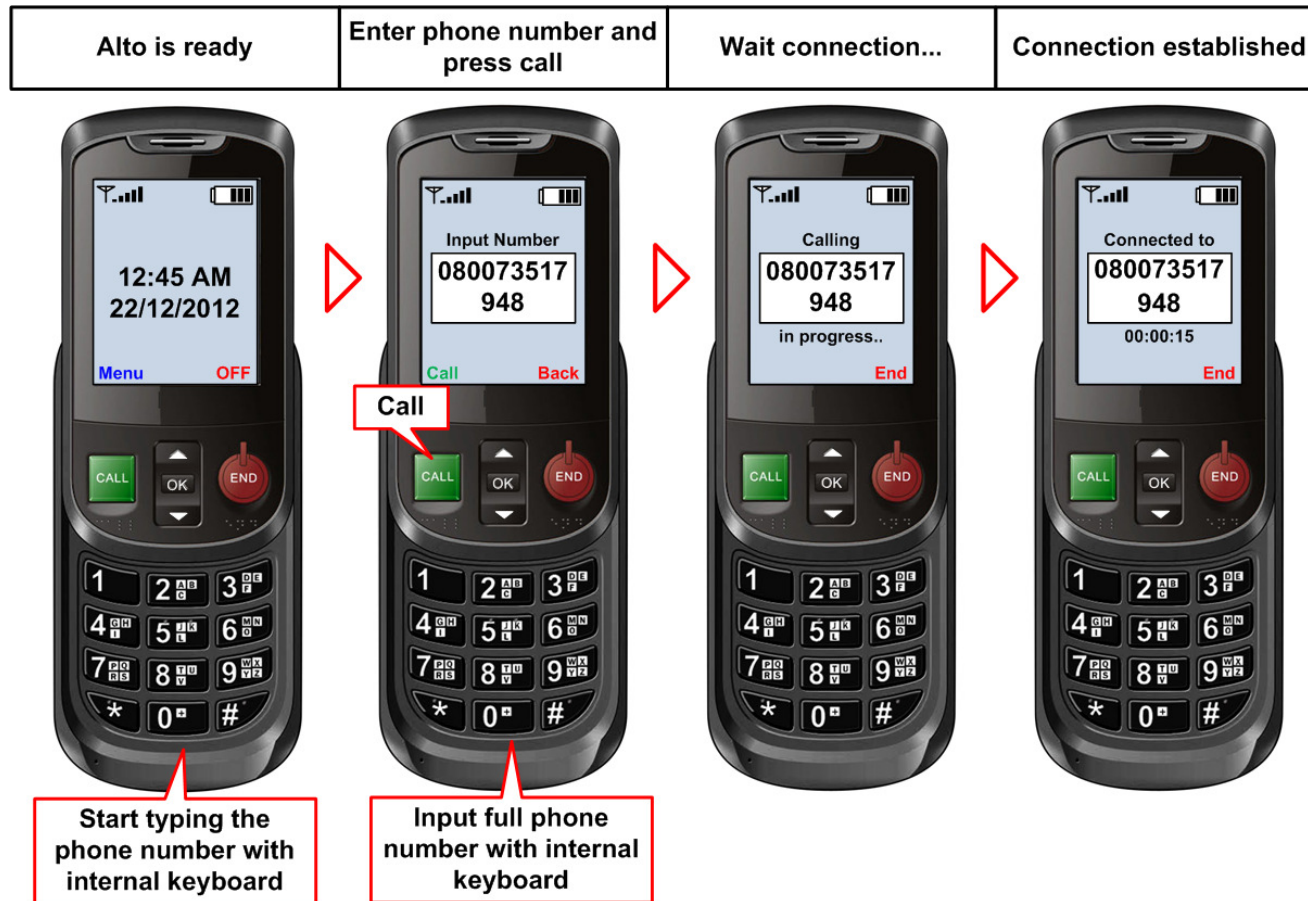
Call a contact

Call to a contact in your list:



Call a number

Call to a number:



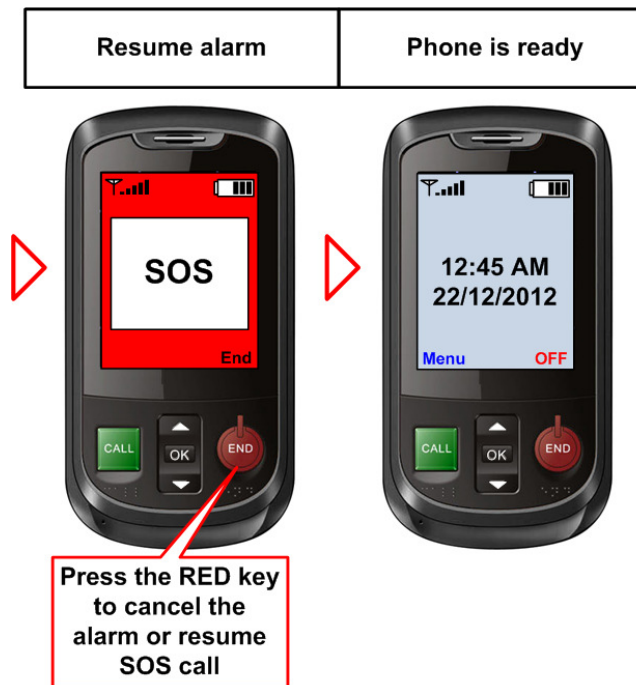
Emergency call

Emergency call to SOS numbers:

To generate an SOS alarm call, press any key **except RED key** for more than 5 seconds. RED key can be used to cancel the operation.



SOS numbers are selected among the contacts (see the settings section). They are chain-called until success. If no SOS contacts are selected, SOS call is disabled.

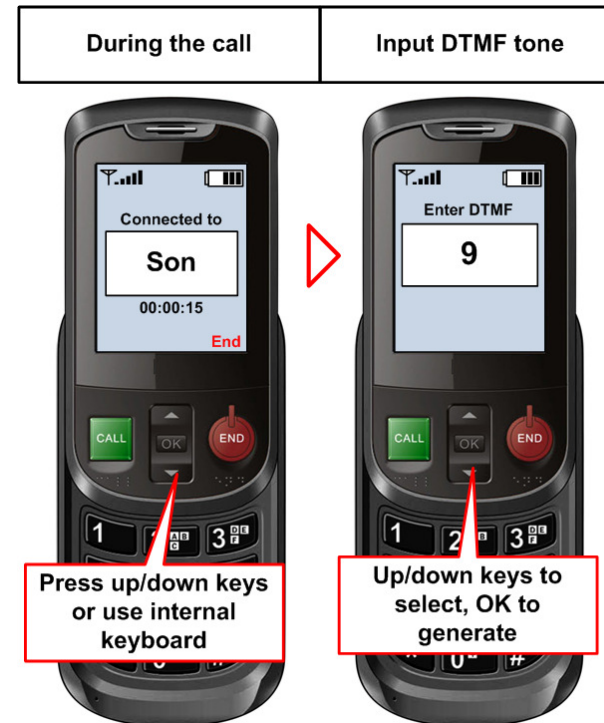


Options during a call

During call, you can tune the volume:



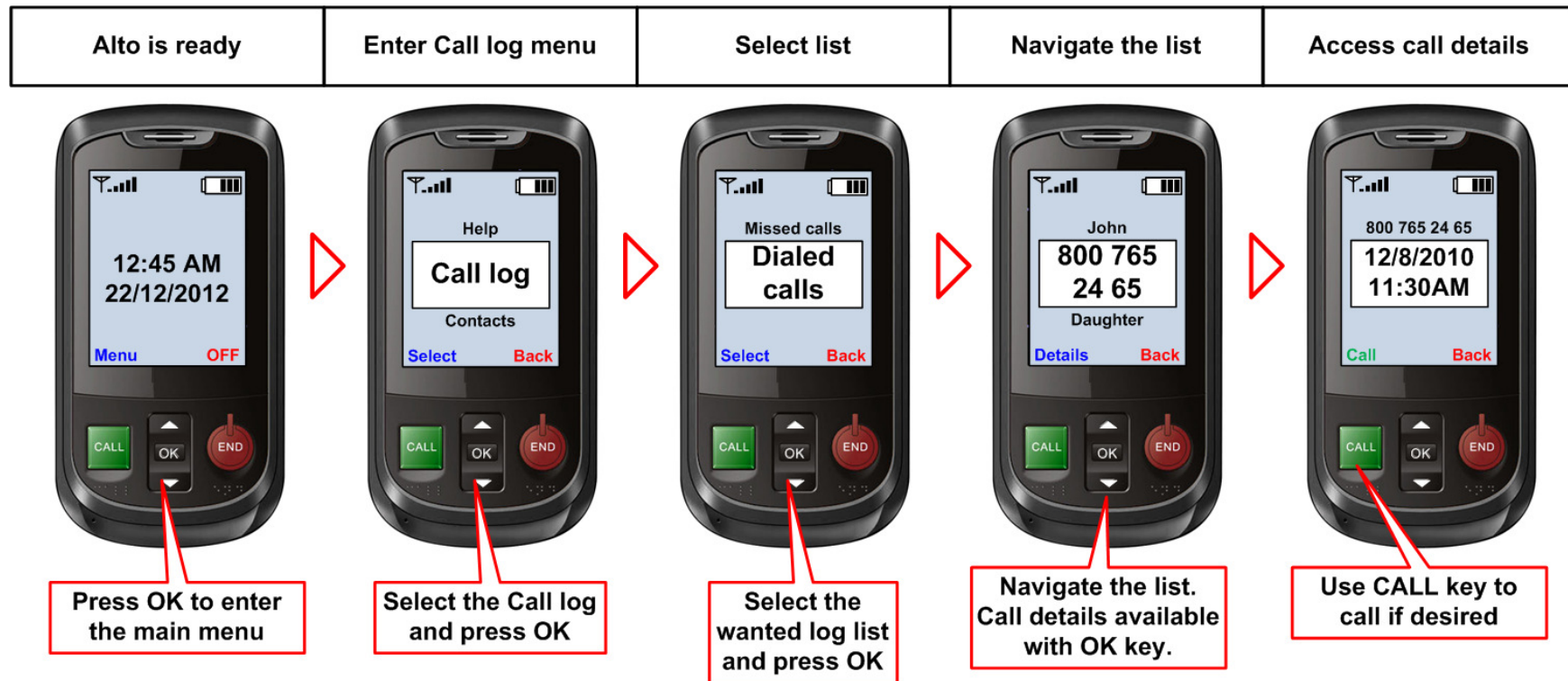
During call, you can generate DTMF tones to make selections operations:



Internal keyboard can alternately be used for such purpose.

Call log

Access to call log through the main menu:



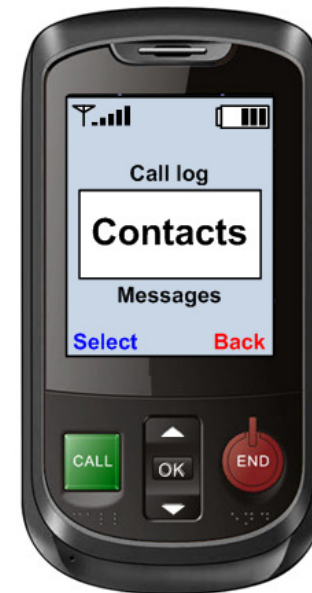
Contacts section

Manage the contacts list present in your Alto II requires the following actions:

- Add a contact
- Delete a contact
- Modify a contact

These operations are explained and detailed step-by-step in the present section.

Contacts section



Add a contact

To add a new contact (part 1 of 2):



Add a contact

To add a new contact (part 2 of 2):



Delete a contact

To delete a contact:



Modify a contact

To edit (modify) a contact (part 1 of 2):



Modify a contact

To edit (modify) a contact (part 2 of 2):



Messages section

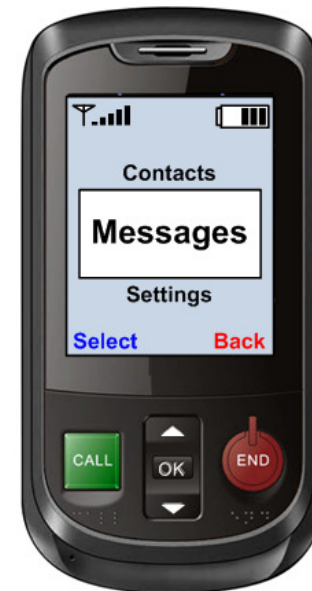
The operations allowed to handle text messages are the following:

- Write and send a message
- Read incoming messages
- Read outgoing messages

These operations are explained and detailed step-by-step in the present section.

N.B: Alto II does not allow to send MMS (multi-media messages), but only to receive them. The options to write the message content are limited to enhance the accessibility by disabled people.

Messages section



Write and send a message

Compose a new message and send it:



Write and send a message

Compose a new message and send it:

Input the text of the message	Select send in the options
-------------------------------	----------------------------



During message writing, different input modes are accessible by using the # key:

1. Dictionary / Upper-case (default)
2. Dictionary / Lower-case
3. Multikey / Upper-case
4. Multi-key / Lower-case
5. Numbers

Further clicking key # goes back to the first option.

There is no display of current input mode in order to keep the display understandable by cognition disabled people.

Read incoming messages

Navigate in the list of received messages, select and read a message. Messages are automatically deleted from the 100th message. It is not possible to delete them manually.



Read outgoing messages

Navigate in the list of sent messages, select and read a message.



Settings section

The settings provide the user with a high degree of configurability to enhance the experience with your Alto II mobile phone. Possible settings are:

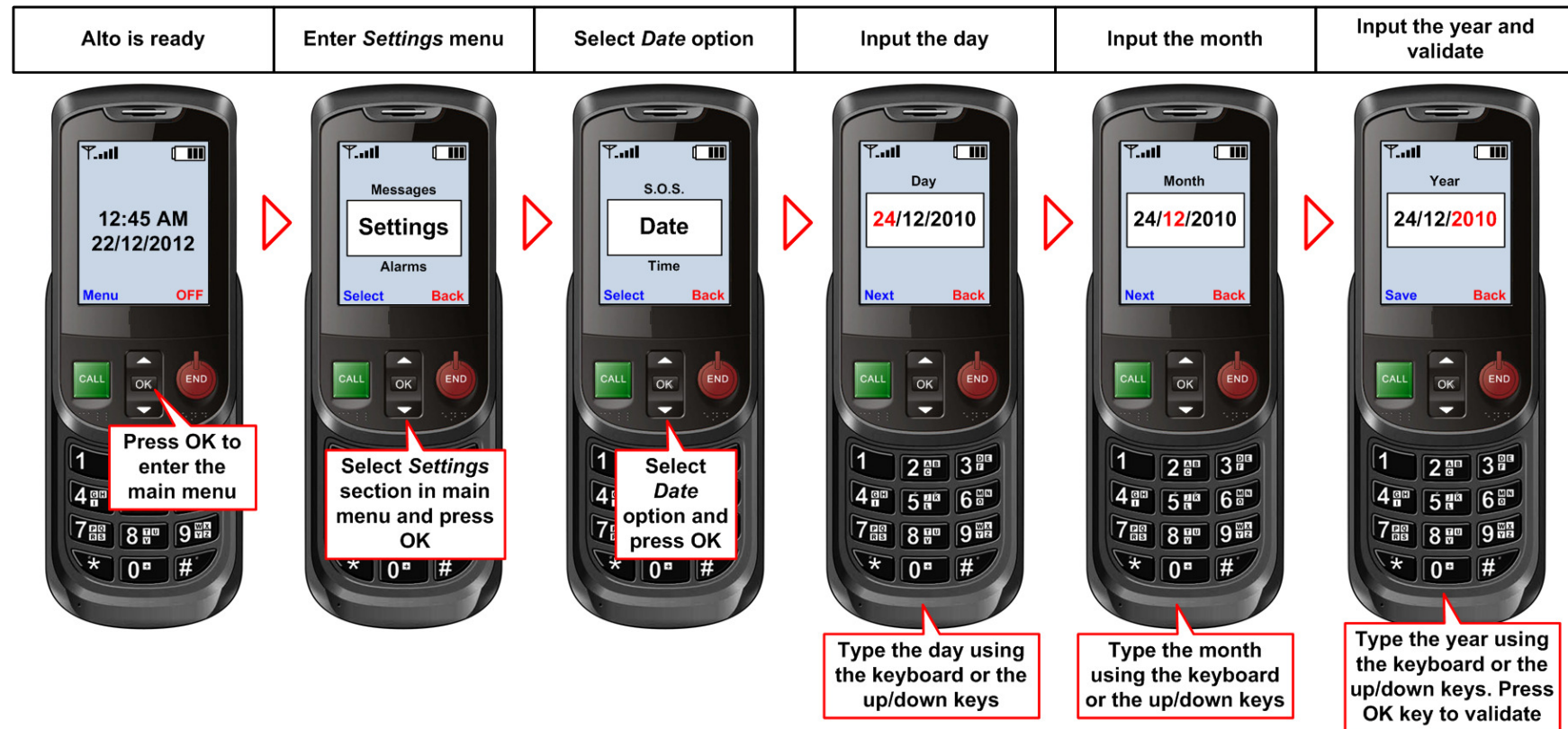
- Setup time and date
- Tune the screen brightness
- Select the voice-guide gender
- Select the language
- Set-up the emergency numbers

These operations are explained and detailed step-by-step in the present section.



Setup the date

Enter the settings section and change the date:



Setup the time

Enter the settings section and change the time:



Tune the screen brightness

Enter the settings section and tune screen brightness:



Select the voice-guide gender

Enter the settings section and select the voice-guide gender:



Select the language

Enter the settings section and select the language:



Set-up the emergency numbers

Enter the settings section and configure the SOS numbers (1/2):

Phone is ready	Enter <i>Settings</i> section	Select <i>S.O.S.</i> option	Select the emergency
----------------	-------------------------------	-----------------------------	----------------------



Press OK to enter the main menu



Select *Settings* section in main menu and press OK



Select *S.O.S.* option and press OK



Select one of the 3 *S.O.S.* number

Set-up the emergency numbers

Enter the settings section and configure the SOS numbers (2/2):



Alarms section

Alarms can be configured to remind important things with various schedules.

- Daily events like medicine
- Weekly event like exercise
- Monthly events like visits
- Yearly events like anniversaries
- Single events (once) like weddings

Alarm configuration is harder a task than simply having a call. To improve understanding of the alarm configuration, we have illustrated two complete examples in the following sections.

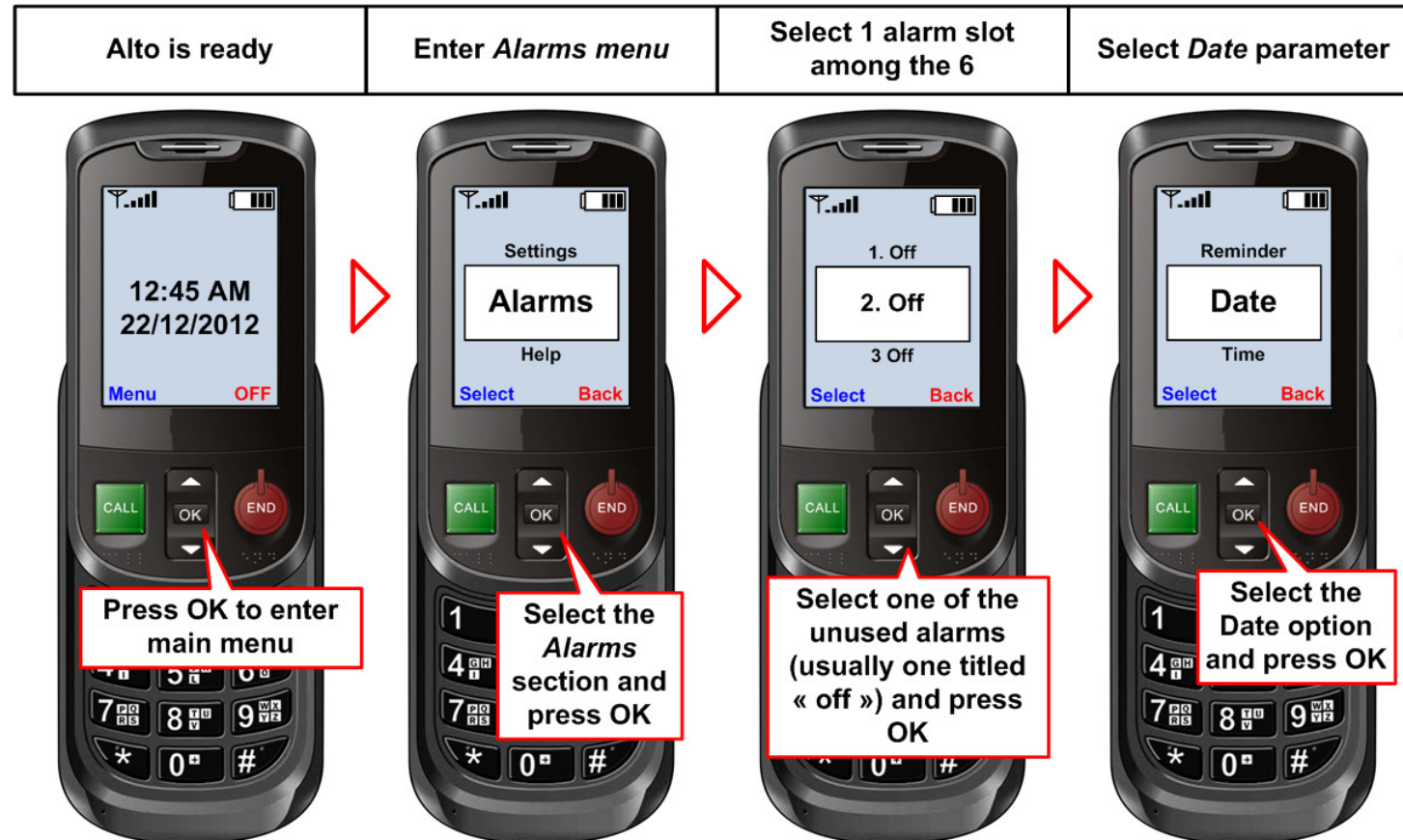
Reminder is notified



Alarm event reminder

Set a yearly alarm

Configure an alarm for an anniversary (1/3):



Set a yearly alarm

Configure an alarm for an anniversary (2/3):

Input date of alarm	Select <i>Remind</i> parameter	Input reminder text	Select <i>Repeat</i> parameter
---------------------	--------------------------------	---------------------	--------------------------------



Set a yearly alarm

Configure an alarm for an anniversary (3/3):



Set a daily alarm

Configuration of an alarm for the daily taking of a medicine (1/3):



Set a daily alarm

Configuration of an alarm for the daily taking of a medicine (2/3):

Input the time of alarm	Select <i>Remind</i> option	Input reminder text	Select <i>Repeat</i> option
-------------------------	-----------------------------	---------------------	-----------------------------



Set a daily alarm

Configuration of an alarm for the daily taking of a medicine (3/3):



Disable an alarm

Disable an alarm (1/2):



Disable an alarm

Disable an alarm (2/2):



Safety precautions

Please read these simple guidelines. Not following them may be dangerous or illegal.

Do not switch the phone on when Mobile Phone use is prohibited or when it may cause interference or danger.

Do not place your phone and its accessories in containers with strong electromagnetic field.

Obey all local laws. Always keep your hands free to operate the vehicle while driving. Your first consideration while driving should be road safety.

Hospitals or health care facilities may be using equipment that could be sensitive to external radio frequency energy. Follow any regulations or rules in force.

Do not use the phone at a refueling point. Do not use near fuel or chemicals.

Follow any restrictions. Wireless devices can cause interference in aircraft.

Keep the phone and all its parts, including accessories, out of the reach of small children.

Use only approved batteries and chargers. Disconnect the charger from the power source when it is not in use. Do not leave the battery connected to a charger for more than a week, since overcharging may shorten its life.

Only qualified personnel should service the phone or install the phone in a vehicle. Faulty installation or service may be dangerous and may invalidate any warranty applicable to the device.

Alto II

Mobile Phone

Adder to the User Manual
Version V35 and V35 V.I.

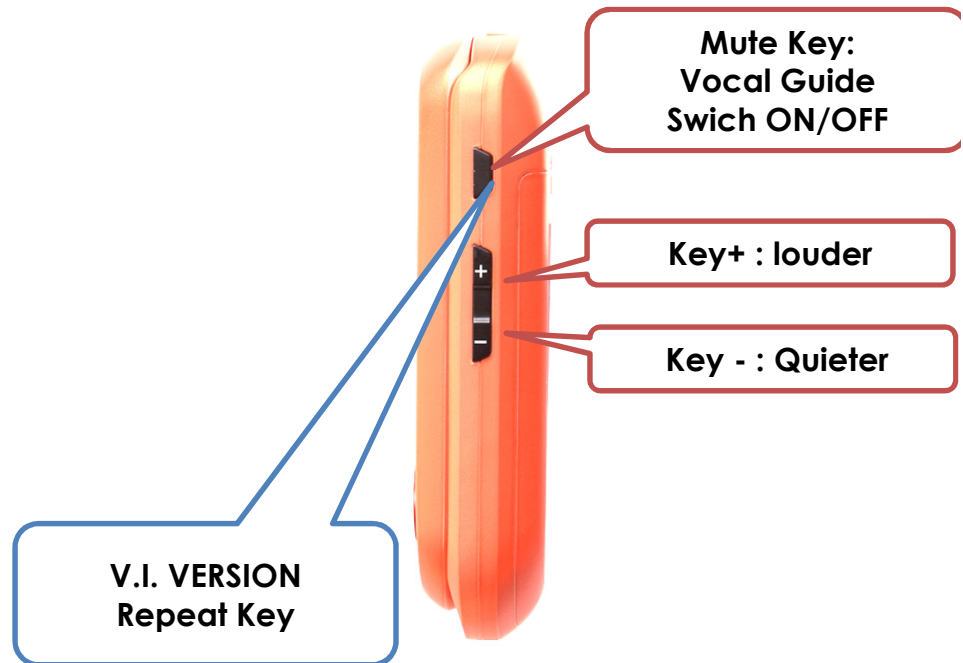
Difference between the Standard version and the V.I. (Visually Impaired) Version

The unique difference consists in the usage of the TTS Key (see image) :

- In the Standard version, the TTS key is used to switch ON/OFF the Speech Guide.
- In the V.I. version, the TTS key is always ON. By pressing the key, you could repeat all Menus, Sub-menus or Texts

Important:

For the seized SMS (messages) or contacts, you could repeat them onyl by adding a space after your text or contact name!



Unlocking the mobile phone

To unlock the mobile phone when it is in the closed position, simply Press the GREE key then on the RED key (then you could access the menu without opening the mobile phone):



Available option during a call

Free-hand call (or loudspeaker mode):



Setting an alarm

You could add a ringtone to a specific alarm (1):



Setting an alarm

You could add a ringtone to a specific alarm (2):



Settings

Please find hereby the new available settings:

- The Contrast
- The Speed of speech
- New ringtones
- The Vibrator mode

Those settings are deeply explained in the following section.

Setting the contrast

Enter into the Settings and select Contrast (either black on white or white on black, we are speaking here about the inner section of the screen)

Alto is ready	Enter <i>Settings</i> menu	Select Contrast option	Select the contrast and validate
---------------	----------------------------	------------------------	----------------------------------



Press OK to enter the main menu



Select *Settings* section in main menu and press OK



Select *Contrast* option and press OK



Select the contrast using up/down keys. Press OK to validate

Setting of the Speed of Voice

Enter into the settings and select Speed of voice (speed may vary from 85% up to 120%).



Setting of a new ringtone

Enter into the settings and select Ringtones, then select a specific ringtone to be linked with a contact:



Setting of the vibrator

Enter into the settings and select the vibrator mode. The modes are the following: always = ringtones + vibrator, never = only ringtones and silent = vibrator without ringtone nor TTS :



Shortcuts

Here are the available shortcuts:

- **Read again a SMS = ***
- **Read again a Menu or Topic = ***
- **Indication of the battery level (by TTS, Vocal) = *#01#**
- **Indication of the signal strength (by TTS, Vocal) = *#02#**
- **Indication of Time (by TTS, Vocal) = *#03#**
- **Indication of the name of Operator/Carrier (by TTS, Vocal) = *#04#**
- **Call log menu; erase a received, called or missed call = #**
- **Call log menu; save a received, called or missed call = 0**

Enjoy your Alto II mobile phone !

GoldGMT
CH-2002 Neuchâtel,
Switzerland